

'23

Grey 
Boulders





'23

Grey 
Boulders

A Year of **Growth**

It has been quite an interesting year, spanning the construction of over 30 residential units for real estate developers, the design of gated communities, factory projects, visualizations, and a move to a studio three times the size of the old one.

With an eye towards the standards of many of the largest architectural practices in the world, as well as the expectations of our clients, we have invested in resources, established partnerships and implemented systems in a deliberate effort to meet industry best practice and international standards in our practice.



Ejuan Hengbowi

Director, GreyBoulders LTD

Clients







Design/ Visualization Studio

Over **8500hrs** of Design Experience,

78 design/viz projects

Serving **17** Real Estate developers, **3**
architectural practices and **2** Industrial
Businesses as clients.

Construction Team

3 Engineers

2 Structural Engineering Firms, 1
MEP Engineering firm as Partners

1 Quantity Surveyor

1 Land Surveyor





Abuja Windsor

* Still Rendering
* Animations

Design by **Bud Consulting**

Abuja Windsor, Still rendering and Animation for an existing 3 hectres luxurious resort, comprising of a hotel, event centre, apartments and residences in Wuse, Abuja.



THE ABUJA WINDSOR
REAL ESTATE DEVELOPMENT





The Ivory Place

- * Still Rendering
- * Animations

Design by



Visualization for a upscale restaurant/bar in
Wase II Abuja.



Pebble Brook Estate

* Still Renderings
* Animation

Design by



Designed by Design Grilles Ltd, proposal in Ibadan, Oyo State, we did still interior and exterior renders and animations for this multi family gated community.







Terrace Cluster

* Design
* Post-Design Consultancy

Design by



Currently at 40% construction, Located on the hills of Admiralty Estate, Asokoro. We are commissioned to design this luxurious terraces each seating on 250sqm. This is larger than the market average for terraces. As its said "Design doesn't end till the clients move in" we later made this two blocks of four unit terraces and four detaches.











Tetrad

* Design

* Construction

Client :



On approximately 1200sqm, we designed and built four units of terrace duplexes. Footprint of each unit is 110sqm, 24sqm being the average size of bedrooms.









PLOT 2628







No.10

* Design

Client:



At Katampe Extension, four units of Luxury Five Bedroom Duplexes, with Cinema, elevator, two maids rooms, study, gym and expansive balconies



10 MK
CONCEPT

PLAT 006







'23

Grey 
Boulders

BlackDiamond Homes

- * Design
- * Contruction

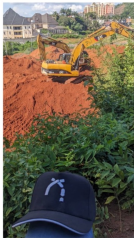
Client:



Three blocks of five bedroom semi detached duplexes and two blocks of five bedroom detached duplexes. With a goal to deliver premium value, the developer, Bluewaves Ltd, fixed some infrastructure for the project access. We are currently building out the basement units for this 3100 sqm project in Asokoro.









CAUTION















Nest Homes

* Design

Client :



Commissioned for construction, this South African designed residential units have open plan living opening up to a large pool deck at the rear for parties to stretch out from the living room onto the outdoor.





Wuye 365

* Construction

Client: **Ocrapop Limited**

Commissioned for construction, this South African designed residential units have open plan living opening up to a large pool deck at the rear for parties to stretch out from the living room onto the outdoor.





'23

Grey 
Boulders

Multi

* Design

Client:



A leading real estate developer with designs of completed and ongoing projects in the northern and eastern regions of Nigeria. Zeecrest Vantage engaged Grey Boulders on numerous design and visualization projects throughout the year.











Facile Hive

* Design

Client:



Block of terraces, in Jabi, Abuja.



PLOT 796

FACU



PLOT 796



FACILE HIVE















Partners

INTERIOR DESIGN



FIONA PHILIPS DESIGN STUDIO

FPDS is an interior design company with specialty and experience in interior designs for decades collaborate on interior visualization projects for space organization, elements selection and product outcome as well as actual set implementation.

MECHANICAL, ELECTRICAL & PLUMBING ENGINEER



AZBAR ENGINEERING

An electromechanical building services contracting company, Azbar with over a decade experience has served dozens of real estate developer MEP services. Azbar Engineering provides all MEP Services in design and on site.

STRUCTURAL ENGINEER



JOSEPH ENGINEERING ASSOCIATES

An engineering firm in practice for over 45 years rendering services across the nation and in Ghana with involvement in Banana Island, Lagos etc. Joseph engineering renders structural drawings and construction supervision on our Black Diamond Homes projects.

STRUCTURAL ENGINEER



STAD STRUCT ENGINEERS

Offering structural design services and construction supervision on the Wuye 365, Jetral projects, Stad Struct is a dynamic engineering practice serving various government parastatals and NGOs on consultancy services



836, 12th Street, Games Village, Abuja

www.greyboulder.com

info@greyboulders.com

● [@greyboulders](https://www.instagram.com/greyboulders)

+2347031627564

'23

Grey 
Boulders