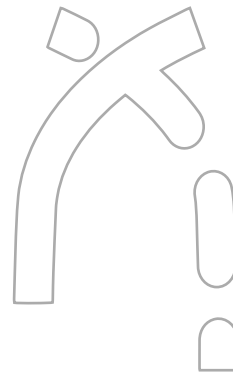




CORPORATE BROCHURE





GreyBoulders stands as a premier Nigerian architectural and construction practice, founded on the principles of minimalist excellence. Our dynamic workforce excels in projects of all scales and complexities, delivering innovative design and construction solutions that transform the built environment.

We create spaces that inspire and endure through our comprehensive suite of services—Construction, Architectural Design, Interior Design, Project Management, and 3D Visualization.



MEET THE TEAM



Efaña Henshaw
Director



Eyamba Henshaw
Head of Admin/Procurement



Ola Tobi
Admin Assistant



Nsikak John
Marketing & Comms Manager



Evalsam Elemi
Design Director



Richmond Awankang
Project Director



Rarum Ibe
Studio Head



Princelyn Blessed
Design Architect



Ab Effiom
Quantity Surveyor



Akaninyene Udoka
Architect/3D Visualizer



Michelle Mosugu
Architect/ AI Innovation Lead



Joy Claudius-Akinyemi
Architect/3D Visualizer



Appollos Uchechukwu
Civil Engineer



Carol-Praise Ayamba
Design Architect



Elizabeth Orok
Civil Engineer



Jesuwemimo Olofin
Architect/Competition Lead



Abubakar Abagana
Design Architect



Babalola Hafees
Design Architect

Studio Stats

14

Studio
Architects

300

square meters of
indoor and outdoor
office space

560

man hours
per week

24

hour power
supply onsite

VPN

VPN server system setup to
allow our staff, collaborators,
and partners access working
files on-site and remotely

24

hour design
services

**Model
Lab**

Our state of the art
scale model making lab
includes 3D Printer, Laser
Cutting and Etching
Equipments

3D

Our tech stack
includes 3DsMax,
Revit, Lumion, and
Adobe Creative Suite

Technical Stats

4

Engineers

3

Quantity
Surveyor

3

Architects

1

Admin

Bureau of Public Procurement

BUREAU OF PUBLIC PROCUREMENT

www.bpp.gov.ng

Expiry Date
December-31-2025



*Competition *Transparency *Efficiency

11, Suleiman Barau Street,
Presidential Villa,
ABUJA-NIGERIA

Interim Registration Report (IRR)

This is to certify the registration of
GREYBOULDERS LTD

Company Registration No. **1829932**
Nigeria Owned / Private Company Limited by Shares

in the National Database of Particulars, Categorization, and Classification of Contractors,
Consultants and Service Providers.



FIRS	PENCOM	NSITF	ITF
Compliant	1 personnel registered. NO PENCOM certificate.	Compliant	Compliant

BUSINESS CATEGORIES (NOTE: Only categories with asterisk (*) have been verified by BPP)

Project Consultant | Project Manager | Design Architect | High-Rise Buildings | Residential Buildings | Office Buildings | Rehabilitation Works | Residential Buildings/Estates |

Generated on: **April-14-2025**

Ref. No. **0000-0015-7205**

Tax Clearance Certificate



It pays to pay your taxes..

TAX CLEARANCE CERTIFICATE

TCC NO : 225097738531
TAX OFFICE : MSTO WUSE
DATE : 2025-03-19

Name of Company : GREYBOULDERS LTD
RC No : 1829932
Date of Incorporation : 2021-08-18
TIN : 23994431-0001
FIRS ID : 2101110128531
Business Address : BLOCK B36, FLAT 5, NO. 13 STR
Business Status : Commenced Business 2021-08-18



This is to certify that the above named company has rendered Income Tax, Value Added Tax, Information Technology Development Levy, Education Tax, as well as other tax returns and paid the assessed taxes in accordance with the relevant tax laws for all years including the past three assessment years as detailed hereunder.

	Assessment Year 2022	Assessment Year 2023	Assessment Year 2024
Revenue	NGN 0.00	NGN 0.00	NGN 4,760,000.00
Assessable Profit/Loss	NGN 0.00	NGN 0.00	(128,276.00)
Total Profit	NGN 0.00	NGN 0.00	NGN 0.00
Tax Payable	NGN 0.00	NGN 0.00	NGN 0.00
Tax Outstanding (If Any)	NGN 0.00	NGN 0.00	NGN 0.00

Source of Income : Architectural and engineering activities and related technical consultancy
Other Comments : Issued
This Certificate Expires on : 2025-12-31



GLADYS AKHUEM ONKHAN
Tax Controller

Official Stamp Impression

Name & Rank of Approving Officer

Disclaimer: The issuance of this Tax Clearance Certificate is based on self-assessment and compliance declarations by the Taxpayer. It does not preclude the service from conducting future audits or investigations that may result in additional tax assessments where under-declarations, omissions, or misstatements are identified.

Industrial Training Fund

Certificate No. **ABJ/0051035**

Federal Republic of Nigeria
Industrial Training Fund

CERTIFICATE OF COMPLIANCE

This is to certify that **GREYBOULDERS LTD**

Address **Nil**

Has complied with year **2024** Industrial Training Fund Contribution
in accordance with the Laws of the Federal Republic of Nigeria cap. 19 Laws
of the Federation Section 6 subsections (1), (11), (111) of 2011 as amended

REGISTRATION NO. **ABJ-009-6395**

RECEIPT NO. **000571984**

THIS CERTIFICATE EXPIRES 31ST DECEMBER **2025**

OKE ADESOLA OLAJIDE
Name and Signature
Head Revenue Inspectorate
& Compliance

CERTIFIED
Area Office Stamp

QCHOCHE KASHAM PHOEBE
Name and Signature
Area Manager

8



No. 00000338498

NIGERIA SOCIAL INSURANCE TRUST FUND

ECS CLEARANCE CERTIFICATE

Employer Registration No. **2005004023**

This is to Certify that

GREYBOULDERS LTD

RC No. **1829932**

ORIGINAL

Has complied with the provisions of the Employees' Compensation ACT, 2010 (ECA 2010).

The details of compliance are as follows:

Description	Year 2023	Year 2024	Year 2025
Number of Employees	3	3	3
ECS Contribution Level	PAID	PAID	PAID

31ST DECEMBER, 2025

This Certificate expires on.....



NIGERIA SOCIAL INSURANCE TRUST FUND

18 MAR 2025

Plot 794, Muhammadu Buhari Way,
P.M.B 446, Garki, Abuja



Approved Signature

National Pension Commission



PCC000000350

Original

National Pension Commission

Pension Clearance Certificate

Employer Code: **PR0000083402**

This is to certify that

GREYBOULDERS LTD

RC No. **1829932**

has complied with the provisions of the Pension Reform Act 2014

The details of the compliance are as follows

Description	Year 2022	Year 2023	Year 2024
Number of Employees	3	3	3
Pension Contributions Remitted to Employees RSAs (₦)	₦116,640.00	₦116,640.00	₦116,640.00
Sum Assured for Group Life Insurance			₦1,944,000.00

This certificate expires **31, Dec 2025**


Date issued: 19 APRIL 2025

Approved signatory

OUR CORE SERVICES

Construction 12

**Architectural
Design 23**

**3D
Visualization 24**

**Interior
Design 37**

**Model
Making 39**

Consultancy 40

Outsourcing 41

A group of construction workers wearing white hard hats and high-visibility vests with the 'GreyBoulders' logo. They are standing on a construction site with rebar visible in the background.

Construction

At our firm, we are committed to delivering exceptional construction solutions through meticulous planning and innovative technologies.

Our engineering approach prioritizes structural integrity and longevity, exemplified by our strategic use of advanced materials like Lafarge Watershield waterproof cement, to provide protection against moisture and water damage.

We collaborate with industry leaders across multiple sectors to consistently engineer world-class structures that meet the highest standards of quality and design. Some of our reliable partners include Jui Hua and W Steel. By integrating cutting-edge technologies like drone monitoring, we optimize project efficiency, reduce costs, and enhance overall building performance, ensuring we consistently exceed our clients' expectations.

PROJECTS

1. No. 10 by RICS
2. Tetrad by RICS
3. Black Diamond Residence
4. Ecowas Residence
5. Four Isles Hotel

ECOWAS RESIDENCE

Location Asokoro, Abuja
Building Type Residential
Project Phase Construction



This luxury 5-bedroom residence showcases our mastery of contemporary design. The property features a stunning pool area complemented by a beveled facade that employs angular and geometric shapes to create a dynamic visual impact. The result is a sophisticated living space that balances bold architectural statements with practical luxury.





**ECOWAS
RESIDENCE**

Location Asokoro, Abuja
Building Type Residential
Project Phase Construction



No. 10
by RICS

Location Katampe Ext, Abuja
Building Type Residential
Project Phase Construction



This luxury residential property features two detached units and one semi-detached unit, each offering 5 bedrooms, 3 living areas, and an aquarium. The contemporary design showcases large glass windows and balconies, topped by a striking steel canopy. The building goes beyond typical market amenities, standing as an architectural masterpiece that brings a fresh perspective to urban living.







This innovative four-unit terrace development redefines urban living with its sophisticated design. Each four-bedroom unit features dual lounges and an aquarium, crowned by a dramatic three-meter cantilevered angular balcony. The facade harmoniously blends clean white surfaces with textured gray panels, creating a striking modern appearance enhanced by abundant natural light.





TETRAD
by RICS

Location Jahi, Abuja
Building Type Residential
Project Phase Construction



BLACKDIAMOND RESIDENCE

Location Asokoro, Abuja
Building Type Residential
Project Phase Construction



This flagship luxury villa complex by BlackDiamond Residence comprises two detached and three semi-detached units, each featuring six bedrooms and a basement complemented by premium amenities including a private gym and cinema. The modern facade combines white and dark fluted polystyrene panels to create a sophisticated aesthetic, while large windows and recessed lighting enhance the contemporary design, flooding interiors with natural light.





BLACKDIAMOND RESIDENCE

Location Asokoro, Abuja
Building Type Residential
Project Phase Construction



FOUR ISLES HOTEL

Location Calabar, Cross River State
Building Type Commercial
Project Phase Construction



This 46-room hotel combines minimalist architecture with traditional design elements, featuring a distinctive facade inspired by Ukara fabric, a significant textile in Efik culture of Cross River State, Nigeria. The fabric, traditionally used in Ekpe society initiation ceremonies and social events, is reimagined in the building's design to celebrate the rich cultural heritage of the Efik people in a contemporary way.





FOUR ISLES HOTEL

Location Calabar, Cross River State
Building Type Commercial
Project Phase Construction



A group of construction workers wearing white hard hats and high-visibility vests are standing on a construction site. The vests have the 'Grey Boulders' logo on them. The background shows a building under construction with rebar visible.

Architectural Design

Our architectural expertise spans an impressive range of projects, from sophisticated residential complexes and dynamic commercial spaces to industrial facilities and transformative public buildings.

We excel in urban planning projects that reshape communities. Through our innovative in-house work mechanism, our staff, collaborators, and partners seamlessly access working files on-site and remotely, ensuring efficient project delivery and a worry-free experience for our clients.

PROJECTS

1. Belitz
2. Four Isles Hotel
3. Frequency By Pith
4. FHA 54
5. Valid Dreams Mall I, Guzape
6. Valid Dreams Mall II, Guzape
6. Russian Consulate
7. Kamara Apartments
8. Jahi 1508
9. Daki Biu
10. Ferdanith, Asokoro
11. No. 10 by RICS



A group of construction workers wearing white hard hats and high-visibility vests are gathered on a construction site. The vests have the 'GreyBoulders' logo on them. They appear to be in a discussion or inspection.

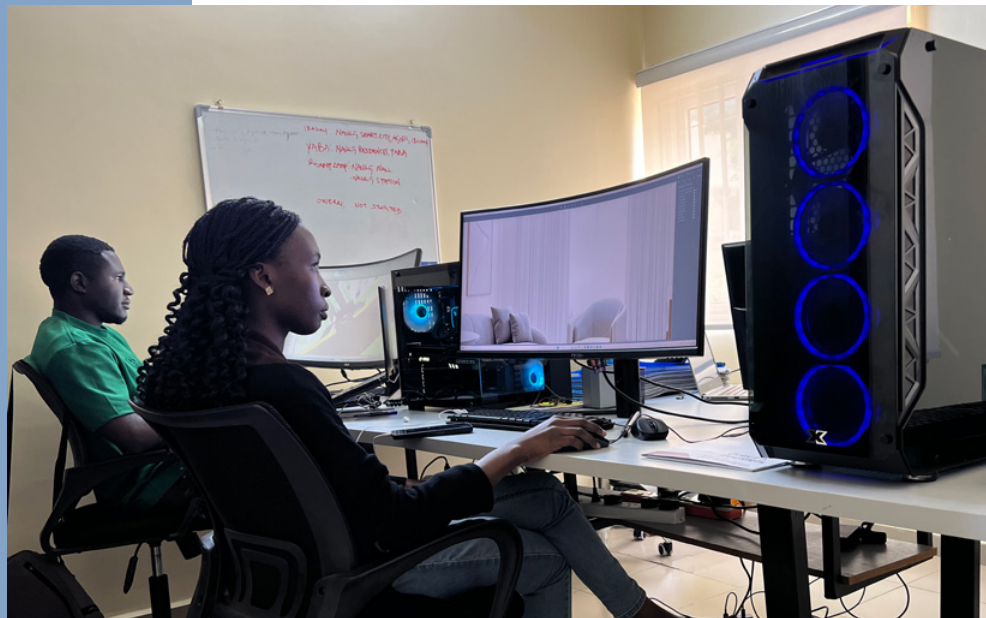
3D Visualization

Our state-of-the-art visualization studio features three customized CPUs equipped with RTX graphics cards, enabling us to handle the most demanding design renders.

We harness the power of industry-leading software including 3DsMax, Revit, Lumion, and Adobe Creative Suite to create photorealistic renderings, immersive virtual reality experiences, and detailed animated walkthroughs. Our conceptual modeling and 3D printing capabilities bring designs to life with unprecedented clarity and precision.

PROJECTS

1. Belitz
2. Four Isles Hotel
3. Frequency By Pith
4. FHA 54
5. Valid Dreams Mall I, Guzape
6. Valid Dreams Mall II, Guzape
6. Russian Consulate
7. Kamara Apartments
8. Jahi 1508
9. Daki Biu
10. Ferdanith, Asokoro
11. No. 10 by RICS





A modern resort comprising of a hotel, multistory apartment building, an event center, a swimming pool, club house, cycling track, an outdoor garden and lush green areas.



FOUR ISLES HOTEL

Location Calabar, Cross River State
Building Type Commercial
Project Phase Design & Visualization



This building celebrates the rich cultural heritage of the Efik people in stunning fashion. The striking facade pays homage to the vibrant Ukara fabric adorning initiates of the Ekpe secret society of Cross River State, Nigeria.

FREQUENCY by PITH

Location Uyo, Akwa Ibom State
Building Type Mixed Use
Project Phase Design & Visualization



This mixed use development, features an office complex + penthouse suite with a swimming pool at the roof terrace. The use of the brand logo motif on a laser cut steel panel at the facade, serves as both a shading device and for aesthetics.



This design features a striking green textured wall that wraps around a fully detached home, creating a living work of art. The wall's organic curves and rich, verdant surface not only provide visual interest but also seamlessly blend the structure with its natural surroundings.



VALID DREAMS MALL I

Location Guzape, Abuja
Building Type Commercial
Project Phase Design & Visualization



We remodelled the facade of this mall from a previous design. It features the use of expansive glazing and curtain walls that introduces a storefront concept to the building. This improves the window shopping experience of both commercial and residential users, leading to improved sales at the mall.



VALID DREAMS MALL II

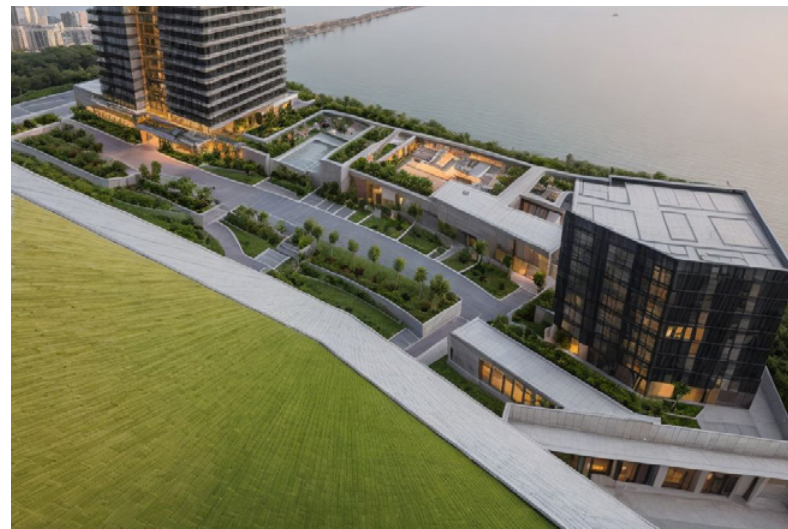
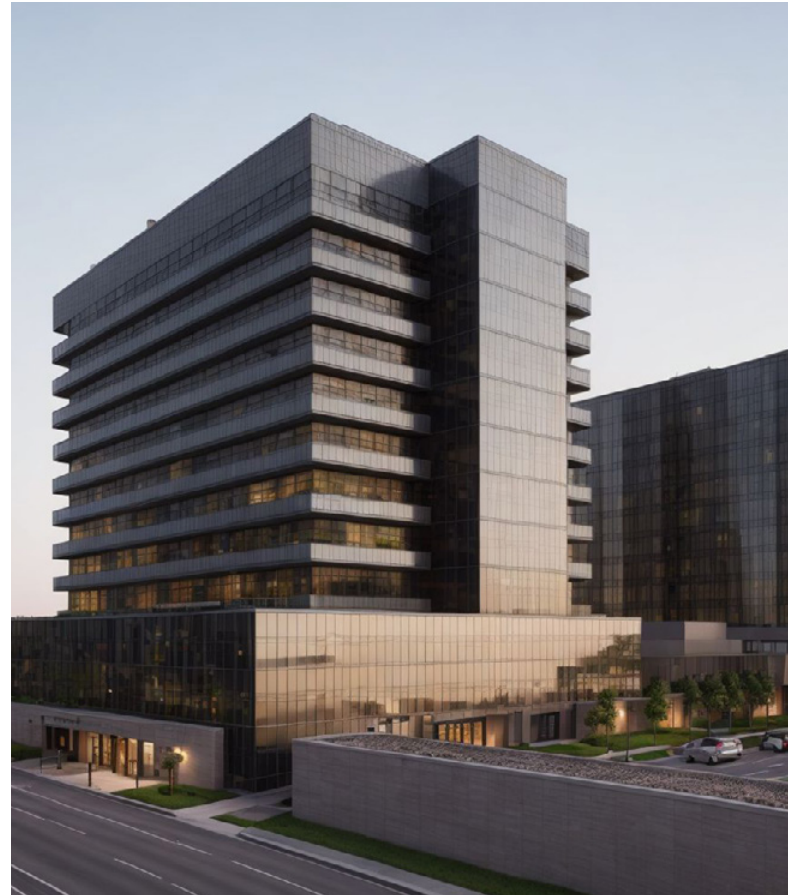
Location Guzape, Abuja
Building Type Commercial
Project Phase Design & Visualization



This aluminium-clad shopping mall, stands as a gleaming beacon of modernity amidst the urban landscape, transforming the street view of the area.

RUSSIAN CONSULATE (PROPOSED)

Location Lagos
Building Type Mixed Use
Project Phase Design & Visualization



This real estate development features a 15-story residential tower and a 6-story commercial building. The residential tower includes approximately 100 units, offering 1-bedroom apartments, 2-bedroom apartments, and penthouses. The commercial space provides rentable offices. Amenities include a spa, restaurant, rooftop swimming pool, and a basketball court.



KAMARA APARTMENTS

Location Apo, Abuja
Building Type Mixed
Project Phase Design & Visualization



This 7 story building is a blend of luxury and sustainable design. Our design considerations included the use of sustainable materials and expansive glass so that residents can enjoy a scenic view of the city's skyline.



This design features a facade with precise lines and thoughtfully placed accents of yellow, adding visual intrigue while preserving a modern aesthetic.





DAKI BIU TERRACE

Location Abuja
Building Type Residential
Project Phase Design & Visualization



This residential masterpiece showcases a terrace with bold, sharp angles that slice through conventional design norms




The catchy geometry of these terrace homes creates a series of dynamic spaces and unexpected vistas.





This residential property was designed to offer beyond average market amenities, transforming the building into an architectural sculpture that challenges perception and redefines urban living.

A photograph of several construction workers wearing white hard hats and high-visibility safety vests. The vests have the 'GreyBoulders' logo on the back. They are standing on a construction site with rebar visible in the background.

Interior Design

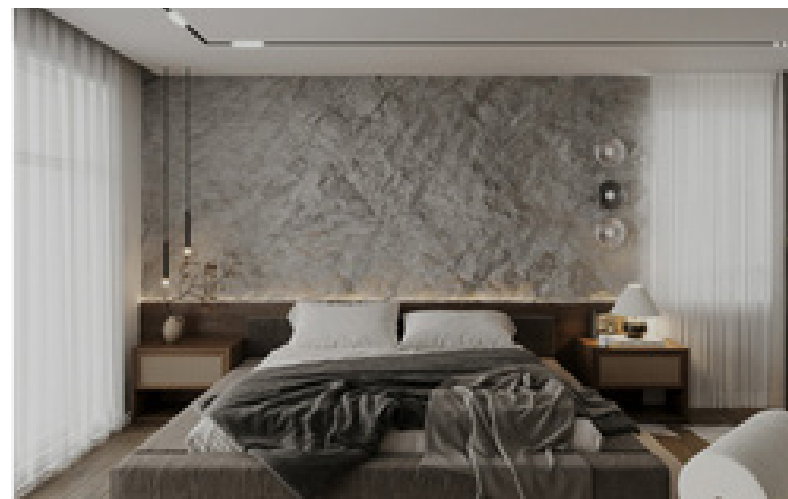
We transform luxury homes and premium commercial spaces into masterpieces of serenity.

In residential design, we embrace refined minimalism—where every material, neutral tone, and lighting element serves a purpose in creating absolute tranquility. Our signature appears in the details: the perfect interplay of natural textures, the strategic placement of ambient lighting, and the careful balance of open space and intimate corners. This mastery extends to commercial projects, as seen in our landmark rooftop bar design. Here, we boldly placed a majestic bonsai tree against the city skyline, creating an unforgettable fusion of nature and urban sophistication. It's this ability to unite unexpected elements—tradition with modernity, simplicity with impact—that defines our distinctive approach to luxury design.

PROJECTS

1. Western Foreshore





This residential interior renovation exemplifies our commitment to sophisticated minimalism. The design features clean lines and a carefully curated neutral palette, enhanced by the thoughtful integration of natural materials. Our strategic lighting design creates distinct atmospheres throughout the space, highlighting architectural elements while maintaining functional elegance.

A group of construction workers wearing white hard hats and high-visibility safety vests. The vests have the 'GreyBoulders' logo on the back. They are standing on a construction site with rebar visible in the background.

Model Making

We're harnessing the power of technology like the Bambu 3D Printer and TT Laser equipment to unlock new levels of creativity and efficiency

Our team is able to craft intricate scale models, custom components as well as the most forward-thinking designs with unmatched precision and speed.





Consultancy

Our consultancy services extend beyond traditional architectural guidance, encompassing comprehensive support for property construction, specialized building components, and media/brand management.

We provide expert insights that optimize project outcomes and ensure seamless execution from concept to completion.





Outsourcing

Our powerhouse team of architects, 3D artists, quantity surveyors, engineers and designers excels at projects of every scale—from intimate residences to landmark developments.

With a diverse pool of talents, our clients are guaranteed of rapid turnaround, diverse expertise and 24/7 availability. Whether you need photo-realistic renderings, detailed construction documents, or innovative design concepts, our specialists are ready to extend your team's capabilities while maintaining unwavering quality standards and rapid delivery times. This makes us the trusted choice for clients seeking excellence in outsourced architectural services



Why Choose GreyBoulders?



Comprehensive Expertise

Our multidisciplinary team provides end-to-end services that eliminates fragmentation and ensures cohesive project execution.



Technology Mastery

We leverage cutting-edge technology and innovative solutions that transform conceptual designs into exceptional built environments.



Adaptive and Scalable Solutions

Our large, dynamic workforce and robust technological infrastructure enable us to tackle diverse challenges while maintaining exceptional quality and attention to detail.



Proven Track Record

Satisfied clients across Nigeria and beyond.



Commitment to Sustainability

We transform spaces to be not just visually striking, but responsibly designed for long-term performance and minimal environmental footprint.

Supercharge your projects with GreyBoulders!

Contact us today. Our multidisciplinary team of architects, engineers, and design professionals provides end-to-end services, from initial conceptualization

through construction and visualization, offering clients a seamless, integrated approach that eliminates fragmentation and ensures cohesive project execution.

Ready to bring your vision to life? Reach out now and let's build something extraordinary together!

Contact Us

+234 907 811 8741

admin@greyboulders.com

marketing@greyboulders.com



Abuja | Lagos | Calabar

C5, 20th Street, Games Village, Abuja
Bourdilon Court, Chevron Drive, Lagos

To learn more, tap on the link and icons below

 www.greyboulders.com



