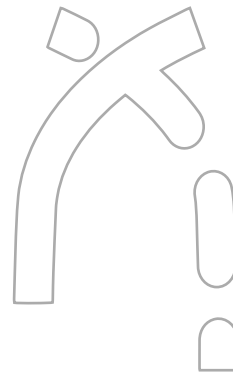




CORPORATE BROCHURE





GreyBoulders is an integrated design-build firm for luxury and commercial developments. Our dynamic workforce excels in projects of all scales and complexities, delivering innovative design and construction solutions that transform the built environment.

We create spaces that inspire and endure through our comprehensive suite of services—Construction, Architectural Design, Interior Design, Project Management, Scale Model Making and 3D Visualization.



MEET THE TEAM



Efaña Henshaw
Director



Eyamba Henshaw
Head of Admin/Procurement



Ola Tobi
Admin Assistant



Nsikak John
Marketing & Comms Manager



Evalsam Elemi
Design Director



Richmond Awankang
Project Director



Rarum Ibe
Studio Head



Princelyn Blessed
Design Architect



Ab Effiom
Quantity Surveyor



Akaninyene Udoka
Architect/3D Visualizer



Michelle Mosugu
Architect/ AI Innovation Lead



Joy Claudius-Akinyemi
Architect/3D Visualizer



Ono-Asi Edet
Architect



Carol-Praise Ayamba
Design Architect



Elizabeth Orok
Civil Engineer



Jesuwemimo Olofin
Architect/Competition Lead



Idaewor Omomoh
Quantity Surveyor



Abubakar Abagana
Design Architect



Babalola Hafees
Design Architect

Studio Stats

14

Studio
Architects

300

square meters of
indoor and outdoor
office space

560

man hours
per week

24

hour power
supply onsite

VPN

VPN server system setup to
allow our staff, collaborators,
and partners access working
files on-site and remotely

24

hour design
services

Model Lab

Our state of the art
scale model making lab
includes 3D Printer, Laser
Cutting and Etching
Equipments

3D

Our tech stack
includes 3DsMax,
Revit, Lumion, and
Adobe Creative Suite

Technical Stats

4

Engineers

3

Quantity
Surveyor

3

Architects

1

Admin

OUR CORE SERVICES

OUR CORE SERVICES

**Architectural
Design** **08**

**3D
Visualization** **09**

Construction **37**

**Interior
Design** **40**

**Model
Making** **42**

Consultancy **43**

Outsourcing **44**



Architectural Design

Our architectural expertise spans an impressive range of projects, from sophisticated residential complexes and dynamic commercial spaces to industrial facilities and transformative public buildings.

We excel in urban planning projects that reshape communities. Through our innovative in-house work mechanism, our staff, collaborators, and partners seamlessly access working files on-site and remotely, ensuring efficient project delivery and a worry-free experience for our clients.

P R O J E C T S

1. Belitz
2. Four Isles Hotel
3. Frequency By Pith
4. FHA 54
5. Valid Dreams Mall I, Guzape
6. Valid Dreams Mall II, Guzape
6. Russian Consulate
7. Kamara Apartments
8. Jahi 1508
9. Daki Biu
10. Ferdanith, Asokoro
11. No. 10 by RICS



A group of construction workers wearing white hard hats and high-visibility vests are gathered on a construction site. The vests have the 'GreyBoulders' logo on them. The background shows a building under construction with rebar visible.

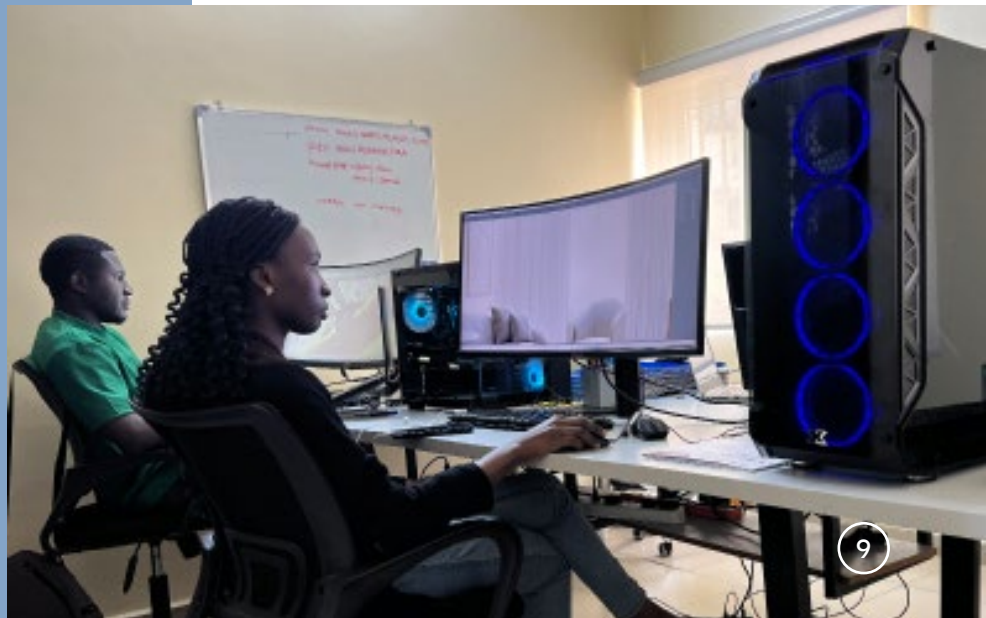
3D Visualization

Our state-of-the-art visualization studio features three customized CPUs equipped with RTX graphics cards, enabling us to handle the most demanding design renders.

We harness the power of industry-leading software including 3DsMax, Revit, Lumion, and Adobe Creative Suite to create photorealistic renderings, immersive virtual reality experiences, and detailed animated walkthroughs. Our conceptual modeling and 3D printing capabilities bring designs to life with unprecedented clarity and precision.

PROJECTS

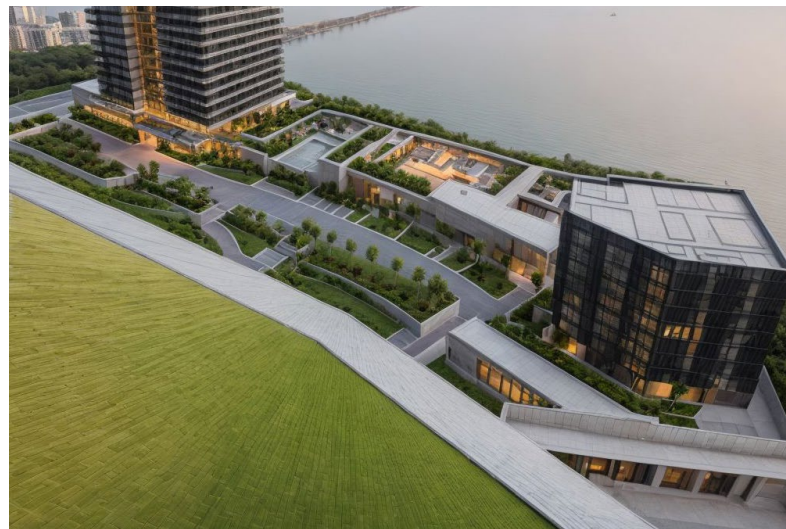
1. Belitz
2. Four Isles Hotel
3. Frequency By Pith
4. FHA 54
5. Valid Dreams Mall I, Guzape
6. Valid Dreams Mall II, Guzape
6. Russian Consulate
7. Kamara Apartments
8. Jahi 1508
9. Daki Biu
10. Ferdanith, Asokoro
11. No. 10 by RICS
12. HFM Headquarters
13. Alicorn by RICS





RUSSIAN CONSULATE (PROPOSED)

Location Lagos
Building Type Mixed Use
Project Phase Design & Visualization



This real estate development features a 15-story residential tower and a 6-story commercial building. The residential tower includes approximately 100 units, offering 1-bedroom apartments, 2-bedroom apartments, and penthouses. The commercial space provides rentable offices. Amenities include a spa, restaurant, rooftop swimming pool, and a basketball court.

SUMMIT HILLS VILLA

Location Calabar, Cross River State
Building Type Residential
Project Phase Design & Visualization



Summit Hills is a modern architectural masterpiece that blends fluid design with natural elegance. Featuring sweeping curves, expansive glass facades, and stone accents, the residence harmonizes contemporary luxury with serene surroundings. Thoughtfully landscaped and meticulously detailed, it redefines sophistication while embracing light, space, and nature.



HFM Headquarters

Location Ikeja, Lagos
Building Type Commercial
Project Phase Design & Visualization



This building features striking elements like a bold coral-red geometric facade and expansive glass curtain walls. This branded HFM complex integrates modern office spaces enhanced by lush vertical gardens and tropical landscaping. This design emphasizes geometric forms, transparency and sustainable green elements throughout the multi-storey structure.

VI Towers by NAWLG

Location Bonny Camp, VI, Lagos
Building Type Mixed Use
Project Phase Design & Visualization



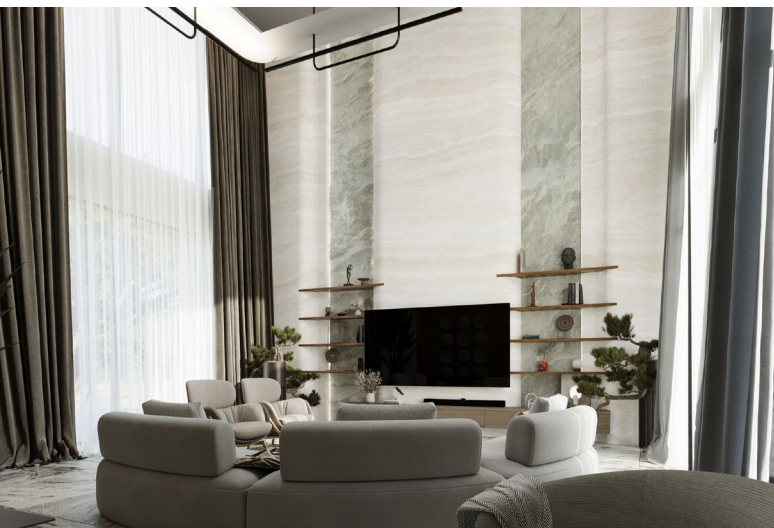
This towers feature curved balconies with golden accents, flowing organic forms, tropical landscaping & modern luxury design creating a striking contemporary architecture.





ALICORN BY RICS

Location Katampe Ext, Abuja
Building Type Residential
Project Phase Design & Visualization



Perched atop the scenic rocky outcrops of Katampe Ext, this residence redefines ultra luxury living with eco-conscious innovation. Featuring a centralized rainwater harvesting system for recycling and reuse.

FOUR ISLES HOTEL

Location Calabar, Cross River State
Building Type Commercial
Project Phase Design, Visualization & Construction



This building celebrates the rich cultural heritage of the Efik people in stunning fashion. The striking facade pays homage to the vibrant Ukara fabric adorning initiates of the Ekpe secret society of Cross River State, Nigeria.

Four Isles Hotel, Calabar



This 46-room hotel combines minimalist architecture with traditional design elements, featuring a distinctive facade inspired by Ukara fabric, a significant textile in Efik culture of Cross River State, Nigeria. The fabric, traditionally used in Ekpe society initiation ceremonies and social events, is reimagined in the building's design to celebrate the rich cultural heritage of the Efik people in a contemporary way.





CONSTRUCTION

Four Isles Hotel, Calabar





CONSTRUCTION

Four Isles Hotel, Calabar



FREQUENCY by PITH

Location Uyo, Akwa Ibom State
Building Type Mixed Use
Project Phase Design & Visualization



This mixed use development, features an office complex + penthouse suite with a swimming pool at the roof terrace. The use of the brand logo motif on a laser cut steel panel at the facade, serves as both a shading device and for aesthetics.



This design features a striking green textured wall that wraps around a fully detached home, creating a living work of art. The wall's organic curves and rich, verdant surface not only provide visual interest but also seamlessly blend the structure with its natural surroundings.



VALID DREAMS MALL I

Location Guzape, Abuja
Building Type Commercial
Project Phase Design & Visualization



We remodelled the facade of this mall from a previous design. It features the use of expansive glazing and curtain walls that introduces a storefront concept to the building. This improves the window shopping experience of both commercial and residential users, leading to improved sales at the mall.



VALID DREAMS MALL II

Location Guzape, Abuja
Building Type Commercial
Project Phase Design & Visualization



This aluminium-clad shopping mall, stands as a gleaming beacon of modernity amidst the urban landscape, transforming the street view of the area.

KAMARA APARTMENTS

Location Apo, Abuja
Building Type Mixed
Project Phase Design & Visualization



This 7 story building is a blend of luxury and sustainable design. Our design considerations included the use of sustainable materials and expansive glass so that residents can enjoy a scenic view of the city's skyline.



This design features a facade with precise lines and thoughtfully placed accents of yellow, adding visual intrigue while preserving a modern aesthetic.



DAKI BIU TERRACE

Location Abuja
Building Type Residential
Project Phase Design & Visualization



This residential masterpiece showcases a terrace with bold, sharp angles that slice through conventional design norms



The catchy geometry of these terrace homes creates a series of dynamic spaces and unexpected vistas.



No. 10 by
RICS

Location Katampe Ext, Abuja
Building Type Residential
Project Phase Design, Visualization & Construction



This residential property was designed to offer beyond average market amenities, transforming the building into an architectural sculpture that challenges perception and redefines urban living.

No 10 by RICS



This luxury residential property features two detached units and one semi-detached unit, each offering 5 bedrooms, 3 living areas, and an aquarium. The contemporary design showcases large glass windows and balconies, topped by a striking steel canopy. The building goes beyond typical market amenities, standing as an architectural masterpiece that brings a fresh perspective to urban living.



No 10 by RICS





CONSTRUCTION

No 10 by RICS



**BLACKDIAMOND
RESIDENCE BY
BLACKDIAMOND HOMES**

Location Asokoro, Abuja
Building Type Residential
Project Phase Design, Visualization & Construction



BlackDiamond Residences



This flagship luxury villa complex by BlackDiamond Residence comprises two detached and three semi-detached units, each featuring six bedrooms and a basement complemented by premium amenities including a private gym and cinema. The modern facade combines white and dark fluted polystyrene panels to create a sophisticated aesthetic, while large windows and recessed lighting enhance the contemporary design, flooding interiors with natural light.



BlackDiamond Residences





**TETRAD by
RICS**

Location Jahi, Abuja
Building Type Residential
Project Phase Design, Visualization & Construction



Tetrad by RICS



This innovative four-unit terrace development redefines urban living with its sophisticated design. Each four-bedroom unit features dual lounges and an aquarium, crowned by a dramatic three-meter cantilevered angular balcony. The facade harmoniously blends clean white surfaces with textured gray panels, creating a striking modern appearance enhanced by abundant natural light.





CONSTRUCTION

Tetrad by RICS



A photograph of construction workers wearing hard hats and safety vests, some with the 'GreyBoulders' logo, standing on a construction site. The image is overlaid with a blue gradient.

Construction

At our firm, we are committed to delivering exceptional construction solutions through meticulous planning and innovative technologies.

Our engineering approach prioritizes structural integrity and longevity, exemplified by our strategic use of advanced materials like Lafarge Watershield waterproof cement, to provide protection against moisture and water damage.

We collaborate with industry leaders across multiple sectors to consistently engineer world-class structures that meet the highest standards of quality and design. Some of our reliable partners include Jui Hua and W Steel. By integrating cutting-edge technologies like drone monitoring, we optimize project efficiency, reduce costs, and enhance overall building performance, ensuring we consistently exceed our clients' expectations.

PROJECTS

1. No. 10 by RICS
2. Tetrad by RICS
3. Black Diamond Residence
4. Ecowas Residence
5. Four Isles Hotel




This luxury 5-bedroom residence showcases our mastery of contemporary design. The property features a stunning pool area complemented by a beveled facade that employs angular and geometric shapes to create a dynamic visual impact. The result is a sophisticated living space that balances bold architectural statements with practical luxury.



**ECOWAS
RESIDENCE**

Location Asokoro, Abuja
Building Type Residential
Project Phase Construction



A photograph of several construction workers wearing white hard hats and high-visibility safety vests. The vests have the 'GreyBoulders' logo on the back. They are standing on a construction site with rebar visible in the background.

Interior Design

We transform luxury homes and premium commercial spaces into masterpieces of serenity.

In residential design, we embrace refined minimalism—where every material, neutral tone, and lighting element serves a purpose in creating absolute tranquility. Our signature appears in the details: the perfect interplay of natural textures, the strategic placement of ambient lighting, and the careful balance of open space and intimate corners. This mastery extends to commercial projects, as seen in our landmark rooftop bar design. Here, we boldly placed a majestic bonsai tree against the city skyline, creating an unforgettable fusion of nature and urban sophistication. It's this ability to unite unexpected elements—tradition with modernity, simplicity with impact—that defines our distinctive approach to luxury design.

PROJECTS

1. Western Foreshore





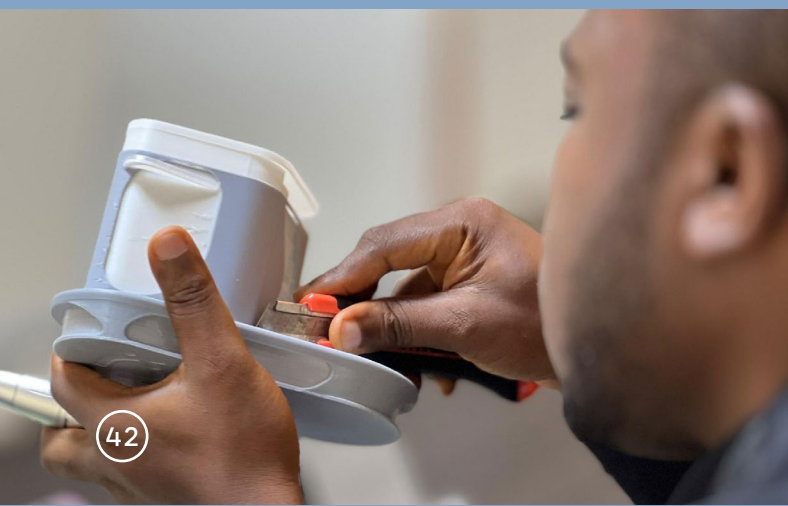
This residential interior renovation exemplifies our commitment to sophisticated minimalism. The design features clean lines and a carefully curated neutral palette, enhanced by the thoughtful integration of natural materials. Our strategic lighting design creates distinct atmospheres throughout the space, highlighting architectural elements while maintaining functional elegance.



Model Making

We're harnessing the power of technology like the Bambu 3D Printer and TT Laser equipment to unlock new levels of creativity and efficiency

Our team is able to craft intricate scale models, custom components as well as the most forward-thinking designs with unmatched precision and speed.



Alicorn by RICS





SCALE MODELS

APO

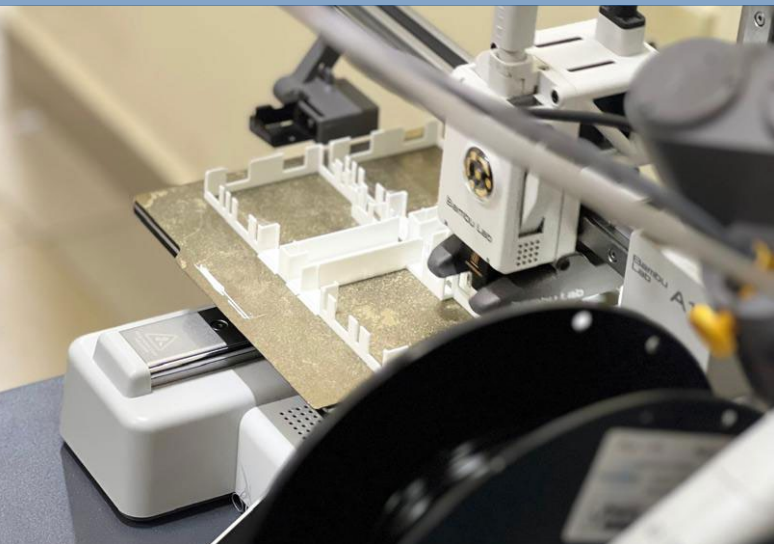


SCALE MODELS

APO



Standalone Prototypes



A group of construction workers wearing white hard hats and high-visibility vests with the 'GreyBoulders' logo. They are standing on a construction site with rebar visible in the background.

Consultancy

Our consultancy services extend beyond traditional architectural guidance, encompassing comprehensive support for property construction, specialized building components, and media/brand management.

We provide expert insights that optimize project outcomes and ensure seamless execution from concept to completion.





Outsourcing

Our powerhouse team of architects, 3D artists, quantity surveyors, engineers and designers excels at projects of every scale—from intimate residences to landmark developments.

With a diverse pool of talents, our clients are guaranteed of rapid turnaround, diverse expertise and 24/7 availability. Whether you need photo-realistic renderings, detailed construction documents, or innovative design concepts, our specialists are ready to extend your team's capabilities while maintaining unwavering quality standards and rapid delivery times. This makes us the trusted choice for clients seeking excellence in outsourced architectural services



OUR CLIENTS



NAWLG



Bureau of Public Procurement

BUREAU OF PUBLIC PROCUREMENT

www.bpp.gov.ng

Expiry Date
December-31-2025



*Competition *Transparency *Efficiency

11, Suleiman Barau Street,
Presidential Villa,
ABUJA-NIGERIA

Interim Registration Report (IRR)

This is to certify the registration of
GREYBOULDERS LTD

Company Registration No. **1829932**

Nigeria Owned / Private Company Limited by Shares

in the National Database of Particulars, Categorization, and Classification of Contractors,
Consultants and Service Providers.



FIRS	PENCOM	NSITF	ITF
Compliant	1 personnel registered. NO PENCOM certificate.	Compliant	Compliant

BUSINESS CATEGORIES (NOTE: Only categories with asterisk (*) have been verified by BPP)

Project Consultant | Project Manager | Design Architect | High-Rise Buildings | Residential Buildings | Office Buildings | Rehabilitation Works | Residential Buildings/Estates |

Generated on: **April-14-2025**

Ref. No. **0000-0015-7205**

Tax Clearance Certificate



It pays to pay your taxes..

TAX CLEARANCE CERTIFICATE

TCC NO : 225097738531
TAX OFFICE : MSTO WUSE
DATE : 2025-03-19

Name of Company : GREYBOULDERS LTD
RC No : 1829932
Date of Incorporation : 2021-08-18
TIN : 23994431-0001
FIRS ID : 2101110128531
Business Address : BLOCK B36, FLAT 5, NO. 13 STR
Business Status : Commenced Business 2021-08-18



This is to certify that the above named company has rendered Income Tax, Value Added Tax, Information Technology Development Levy, Education Tax, as well as other tax returns and paid the assessed taxes in accordance with the relevant tax laws for all years including the past three assessment years as detailed hereunder.

	Assessment Year 2022	Assessment Year 2023	Assessment Year 2024
Revenue	NGN 0.00	NGN 0.00	NGN 4,760,000.00
Assessable Profit/Loss	NGN 0.00	NGN 0.00	(128,276.00)
Total Profit	NGN 0.00	NGN 0.00	NGN 0.00
Tax Payable	NGN 0.00	NGN 0.00	NGN 0.00
Tax Outstanding (If Any)	NGN 0.00	NGN 0.00	NGN 0.00

Source of Income : Architectural and engineering activities and related technical consultancy
Other Comments : Issued
This Certificate Expires on : 2025-12-31



GLADYS AKHUEM ONKHAN
Tax Controller

Official Stamp Impression

Name & Rank of Approving Officer

Disclaimer: The issuance of this Tax Clearance Certificate is based on self-assessment and compliance declarations by the Taxpayer. It does not preclude the service from conducting future audits or investigations that may result in additional tax assessments where under-declarations, omissions, or misstatements are identified.

Industrial Training Fund

Certificate No. **ABJ/0051035**

Federal Republic of Nigeria
Industrial Training Fund

CERTIFICATE OF COMPLIANCE

This is to certify that **GREYBOULDERS LTD**

Address **Nil**

Has complied with year **2024** Industrial Training Fund Contribution
in accordance with the Laws of the Federal Republic of Nigeria cap. 19 Laws
of the Federation Section 6 subsections (1), (11), (111) of 2011 as amended

REGISTRATION NO. **ABJ-009-6395**

RECEIPT NO. **000571984**

THIS CERTIFICATE EXPIRES 31ST DECEMBER **2025**

OKE ADESOLA OLATUNDE
Name and Signature
Head Revenue Inspectorate
& Compliance

CERTIFIED
Area Office Stamp

OCHOCHÉ KASHAM PHOEBE
Name and Signature
Area Manager



No. 00000338498

NIGERIA SOCIAL INSURANCE TRUST FUND

ECS CLEARANCE CERTIFICATE

Employer Registration No. **2005004023**

This is to Certify that

GREYBOULDERS LTD

RC No. **1829932**

ORIGINAL

Has complied with the provisions of the Employees' Compensation ACT, 2010 (ECA 2010).

The details of compliance are as follows:

Description	Year 2023	Year 2024	Year 2025
Number of Employees	3	3	3
ECS Contribution Level	PAID	PAID	PAID

31ST DECEMBER, 2025

This Certificate expires on.....



NIGERIA SOCIAL INSURANCE TRUST FUND

18 MAR 2025

Plot 794 Muhammadu Buhari Way,
P.M.S 446, Garki, Abuja



Approved Signature

National Pension Commission



PCC000000350

Original

National Pension Commission

Pension Clearance Certificate

Employer Code: **PR0000083402**

This is to certify that

GREYBOULDERS LTD

RC No. **1829932**

has complied with the provisions of the Pension Reform Act 2014

The details of the compliance are as follows

Description	Year 2022	Year 2023	Year 2024
Number of Employees	3	3	3
Pension Contributions Remitted to Employees RSAs (₦)	₦116,640.00	₦116,640.00	₦116,640.00
Sum Assured for Group Life Insurance			₦1,944,000.00

This certificate expires **31, Dec 2025**


Date issued: 19 APRIL 2025

Approved signatory

1. POLICY STATEMENT

GreyBoulders is committed to providing and maintaining a safe and healthy working environment for all employees, contractors, visitors, and stakeholders. We recognize that the health, safety, and welfare of our 14 studio architects, 4 engineers, 3 quantity surveyors, 3 project architects, and 1 administrative staff member are paramount to our success and sustainability.

This policy demonstrates our commitment to preventing accidents, incidents, and occupational ill-health, while ensuring compliance with all applicable Nigerian health and safety legislation, including the Labour Act, Factories Act, and relevant NSITF regulations.

2. RESPONSIBILITIES

2.1 Management Responsibilities

- Ensure adequate resources are allocated for health and safety implementation
- Provide necessary training, supervision, and equipment
- Conduct regular risk assessments and safety audits
- Maintain compliance with all statutory requirements
- Review and update this policy annually or as circumstances require

2.2 Employee Responsibilities

- Take reasonable care of their own health and safety and that of others
- Cooperate with management on health and safety matters
- Report hazards, accidents, and near-misses immediately
- Use provided safety equipment and follow established procedures
- Attend mandatory health and safety training sessions

3. SPECIFIC WORKPLACE HAZARDS AND CONTROLS

3.1 Studio Environment (300 sqm facility)

Hazards Identified:

- Extended computer workstation use (DSE risks)
- Poor posture and repetitive strain injuries
- Eye strain from prolonged screen work
- Electrical hazards from multiple workstations

Control Measures:

- Ergonomic workstation assessments for all 14 studio architects
- Regular breaks every 1 hours for screen-based work
- Provision of adjustable chairs, monitor stands, and ergonomic accessories
- Annual eye examinations for all staff
- Regular electrical testing and PAT testing of equipment



3.2 Model Lab Operations

Hazards Identified:

- 3D printer emissions and heat exposure
- Laser cutting radiation and fume exposure
- Sharp tools and cutting equipment
- Chemical exposure from modeling materials

Control Measures:

- Mandatory PPE including safety glasses, gloves, and respiratory protection
- Local exhaust ventilation systems for 3D printers and laser equipment
- Safe storage and handling procedures for chemicals and materials
- Regular maintenance and calibration of all equipment
- Restricted access - authorized personnel only

3.3 Electrical Safety (24-hour power supply system)

Hazards Identified:

- Electrical shock from continuous power systems
- Fire risk from electrical equipment
- Generator-related hazards

Control Measures:

- Annual electrical safety inspections by certified electricians
- Emergency shutdown procedures clearly displayed
- Fire detection and suppression systems
- Regular generator maintenance and safety checks
- Electrical safety training for relevant personnel

3.4 IT Infrastructure and VPN Systems

Hazards Identified:

- Cybersecurity threats
- Data protection breaches
- Server room fire and electrical hazards

Control Measures:

- Comprehensive cybersecurity protocols
- Regular data backups and security updates
- Server room fire suppression systems
- Access control and monitoring systems
- Staff training on data protection and cybersecurity

4. EMERGENCY PROCEDURES

4.1 Emergency Contacts

- Emergency Services: 0803 200 3557 (Abuja FireService), 0705 733 7653 (Police)
- Facility Emergency Coordinator: Eyamba Henshaw
- First Aid Officers: Ola Tobi

4.2 Evacuation Procedures

- Clearly marked evacuation routes displayed throughout facility
- Assembly point designated in outdoor space area
- Monthly fire drills conducted
- Disabled access evacuation procedures established

4.3 Incident Reporting

- All accidents, near-misses, and incidents reported within 24 hours
- Investigation procedures for all incidents
- Reporting to relevant authorities as required by law
- Lessons learned communicated to all staff

5. TRAINING AND COMPETENCE

5.1 Induction Training

All new employees receive comprehensive health and safety induction covering:

- Company health and safety policy
- Workplace-specific hazards and controls
- Emergency procedures
- Reporting responsibilities

5.2 Ongoing Training

- Annual health and safety refresher training for all staff
- Specialized training for Model Lab operations
- First aid training for designated personnel
- Fire warden training for evacuation coordinators

6. MONITORING AND REVIEW

- Monthly health and safety meetings
- Quarterly safety inspections
- Annual policy review
- Continuous improvement based on incident analysis and best practices



1. POLICY OVERVIEW

GreyBoulders maintains comprehensive Employee Liability Insurance to protect both the company and its employees against work-related risks, ensuring compliance with Nigerian employment legislation and NSITF requirements.

2. COVERAGE DETAILS

2.1 Employer's Liability Insurance

Coverage Amount: ₦50,000 minimum per incident

Covers:

- Legal liability for injury or illness to employees during work
- Court costs and legal expenses
- Compensation payments as determined by law

2.2 Professional Indemnity Insurance

Coverage Amount: ₦100,000 per claim

Covers:

- Professional negligence in architectural design and consulting services
- Errors and omissions in project delivery
- Legal costs and defense expenses
- Breach of professional duty claims

2.3 Public Liability Insurance

Coverage Amount: ₦25,000 per incident

Covers:

- Third-party injury or property damage
- Visitor accidents on premises
- Public liability arising from business operations

3. SPECIFIC COVERAGE AREAS

3.1 Studio Operations

- Workstation-related injuries (RSI, eye strain, posture-related issues)
- Slip, trip, and fall incidents within the 300 sqm facility
- Equipment-related injuries from computers and office equipment

3.2 Model Lab Activities

- Injuries from 3D printers, laser cutting equipment
- Chemical exposure incidents
- Burns or cuts from modeling activities

- Respiratory issues from equipment emissions

3.3 Site Visits and Project Work

- Travel-related incidents for project architects and engineers
- Site visit accidents and injuries
- Third-party claims arising from site inspections

3.4 Technology and Cyber Risks

- Data breach liability
- Cyber attack consequences
- Technology errors and omissions
- Business interruption from IT failures

4. CLAIMS PROCEDURE

4.1 Immediate Actions

- Ensure injured person receives appropriate medical attention
- Secure the incident scene and preserve evidence
- Notify insurance provider within 24 hours
- Complete detailed incident report
- Cooperate fully with insurance investigation

4.2 Documentation Required

- Completed claim form
- Medical reports and certificates
- Witness statements
- Photographs of incident scene
- Employment records of affected individual
- NSITF notification where applicable

5. EXCLUSIONS AND LIMITATIONS

5.1 Standard Exclusions

- Intentional acts or criminal behavior
- Non-work-related injuries
- Pre-existing medical conditions (unless work-aggravated)
- Incidents under the influence of alcohol or drugs

5.2 Specific Limitations

- Coverage territory: Nigeria and temporary work abroad



- Policy period: Annual renewal required
- Retroactive date: 1st January 2025

6. COMPLIANCE AND STATUTORY OBLIGATIONS

6.1 NSITF Compliance

- All employees registered with Nigeria Social Insurance Trust Fund
- Regular premium payments maintained
- Injury reporting procedures followed
- Annual returns submitted

6.2 PenCom Compliance

- Employee pension contributions maintained
- Group life insurance in place
- Regular compliance audits conducted

7. POLICY ADMINISTRATION

7.1 Policy Holder

- Company: GreyBoulders Limited
- Address: C5, 20th Street, Games Village
- Contact: Eyamba Henshaw, Head of Admin

7.2 Insurance Provider

- Primary Insurer: AXA Mansard
- Policy Number: 10034900
- Policy Period: Annual - 31st January
- Renewal Date: Annual

7.3 Premium Structure

- Base premium calculated on payroll and risk assessment
- Additional premiums for specialized activities (Model Lab operations)
- Experience rating adjustments based on claims history
- Regular premium reviews and adjustments

8. CONTACT INFORMATION

8.1 Emergency Contact

- Health and Safety Officer: Eyamba Henshaw
- Phone: 0701 513 6669
- Email: eyamba.henshaw@greyboulders.com

8.2 Insurance Claims Contact

- Claims Hotline:
- Claims Email:
- Online Portal:

POLICY IMPLEMENTATION AND REVIEW

Effective Date 1st January 2025

These policies become effective immediately upon adoption and shall be reviewed annually or following any significant incident or change in operations.

Authorization

This policy has been approved by GreyBoulders management and applies to all employees, contractors, and visitors to our facilities.

- Policy Owner: Efaña Henshaw, Director
- Date: 1st January 2025
- Next Review Date: 1st January 2026

Why Choose GreyBoulders?



Comprehensive Expertise

Our multidisciplinary team provides end-to-end services that eliminates fragmentation and ensures cohesive project execution.



Technology Mastery

We leverage cutting-edge technology and innovative solutions that transform conceptual designs into exceptional built environments.



Adaptive and Scalable Solutions

Our large, dynamic workforce and robust technological infrastructure enable us to tackle diverse challenges while maintaining exceptional quality and attention to detail.



Proven Track Record

Satisfied clients across Nigeria and beyond.



Commitment to Sustainability

We transform spaces to be not just visually striking, but responsibly designed for long-term performance and minimal environmental footprint.

Supercharge your projects with GreyBoulders!

Contact us today. Our multidisciplinary team of architects, engineers, and design professionals provides end-to-end services, from initial conceptualization

through construction and visualization, offering clients a seamless, integrated approach that eliminates fragmentation and ensures cohesive project execution.

Ready to bring your vision to life? Reach out now and let's build something extraordinary together!

Contact Us

+234 907 811 8741

admin@greyboulders.com

marketing@greyboulders.com



Abuja | Lagos | Calabar

C5, 20th Street, Games Village, Abuja
Bourdilon Court, Chevron Drive, Lagos

To learn more, tap on the link and icons below

 www.greyboulders.com



